

Primary Assembly



Be informed.

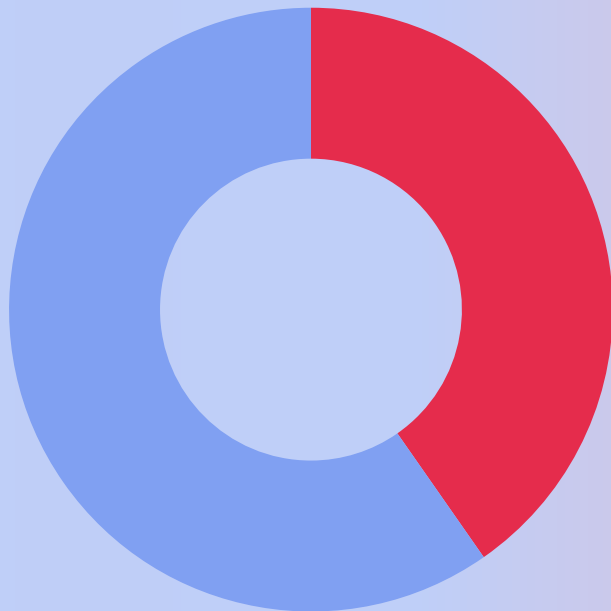


Be curious.



Be heard.

Your latest results: "Is technology the answer to improving accessibility?"



Yes

59.7%

No

40.3%

"Yes, because voice recognition and other technologies could really help people with disabilities."

Homerswood Primary and Nursery School

"I think that technology will definitely help as without tech we wouldn't have stair lifts or escalators."
Northwood College for Girls

"Some things require technology, but not all people's needs can be met by technology."

Bungay Primary School

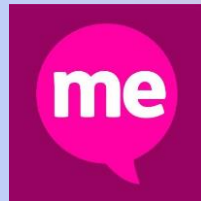
"Sometimes a person's disability will stop them from using the technology. The tech needs to improve quicker."
Mildmay Primary School

45,329 young people voted this week! Were you one of them?

Your views on “Is technology the answer to improving accessibility?” were also heard by:



Disability Rights UK



Mencap



Scope



Sense



Sociability



Be informed.



Be curious.



Be heard.

Want to share your views with us? Share your votes and comments by logging into your VotesforSchools account. You can also get in touch at primary@votesforschools.com

Thought of the week:

Why are some plants linked to Christmas?



Christmas is coming, and shoppers are out looking for **presents** and Christmas **food**, in the **shops** and **online**.

In recent years, **supermarkets** and other big **brands** have been **competing** to make the **most popular Christmas advert**.





Some people are saying that watching these **Christmas adverts** is a **new Christmas tradition**.

This year, the John Lewis advert about **Snapper the Venus flytrap** has **got people talking**.

Venus flytrap:
A plant that **traps flies** and **digests** them for their **nutrients**.





Who knows, maybe Venus fly traps are going to become a **traditional Christmas plant** in the future...

But how did plants like **holly, ivy** and **fir trees** become Christmas **traditions**? Let's find out!

Tradition:
Something that has been done by a **group of people** for a **long time**.



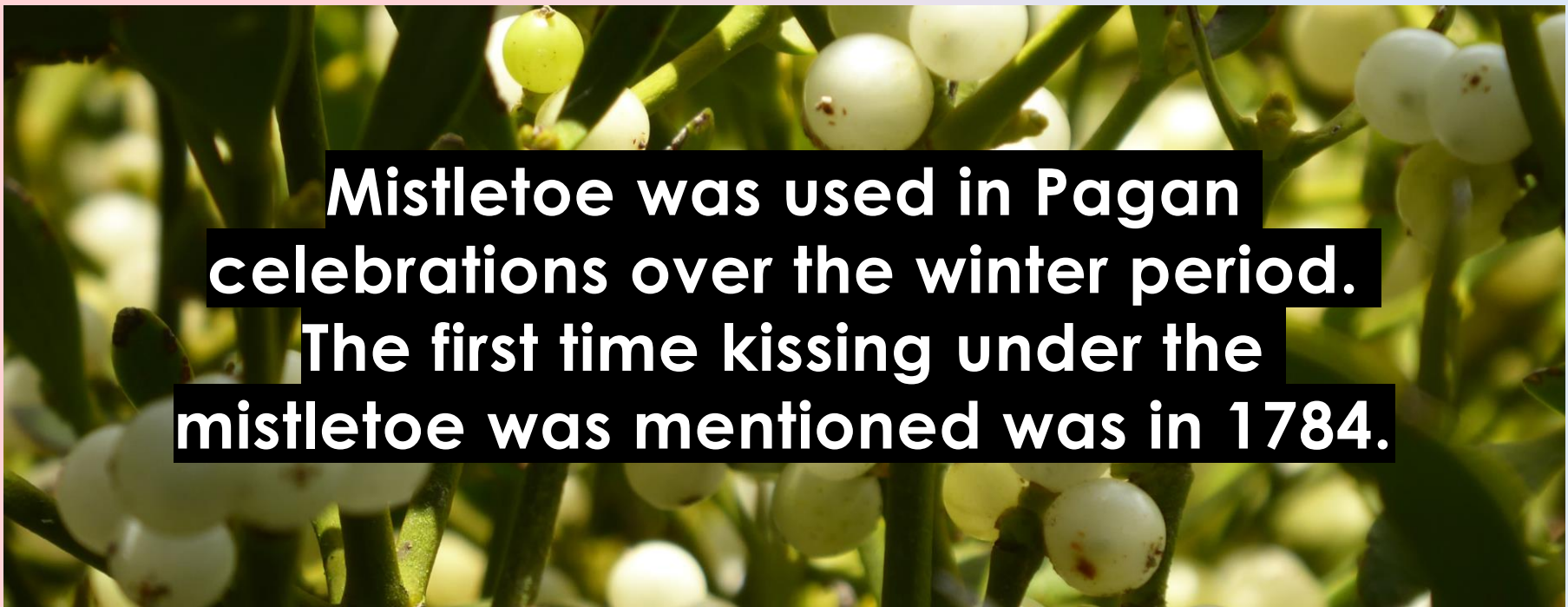


Tree-mendously interesting!
Now you will hear some **facts with missing information** about some of the **traditional Christmas plants** and how they made their way into festive celebrations. Share your thoughts on the correct answer **using 1, 2 or 3 fingers.**





Be curious: Going back to their roots



Mistletoe was used in Pagan celebrations over the winter period. The first time kissing under the mistletoe was mentioned was in 1784.



Pagan



Roman



Chinese



Be curious: Going back to their roots



The Celts and the Romans both believed that holly's evergreen leaves were magical, so they brought it into their houses in winter.



beautiful



poisonous



magical



Ivy is another evergreen plant that the Celts thought was special in winter. In the past, it was also used in a paste to treat sunburn.



headaches



sunburn



sickness



Poinsettias are originally from Mexico, where they were first used as a dye by the Aztec civilisation.



Indus



Egyptian



Aztec



Be curious: Going back to their roots



Frankincense and myrrh were as precious as gold in the era that Christians believe Jesus was born. They are taken from different tree saps.



gold



salt



bronze



Be curious: Going back to their roots



Oranges used to be put in stockings because people thought of them as a treat. Some people think they are linked to the story of Saint Nicholas.



**Saint
Nicholas**



**The Snow
Queen**



Rudolf



Be curious: Going back to their roots



In medieval times, people used cloves and other spices to protect them from illness. The Victorians began decorating oranges with them instead.



frost



wolves



illness



Cranberries were a traditional ingredient in the American celebration of Thanksgiving before people started cooking with them at Christmas.



Thanksgiving



Labour Day



Halloween



Be curious: Going back to their roots



In New Zealand, Christmas is in summer, when the pōhutukawa tree flowers. It has been named New Zealand's Christmas tree because of its bright red flowers.



summer



autumn



winter



This Christmas, **take a look around** at **school**, at **home** and in your **local area** to see which **plants** and **fruits** you **notice** taking part in the celebrations.

I spy...

Can you think of anywhere you can see any of these **plants** or **fruits** near you?

Ivy

Poinsettias

Holly

Fir trees

Oranges

Mistletoe

Cranberries

This week you're discussing: "Have Christmas adverts lost their magic?"

Yes

I think they've lost their magic. They don't show realistic Christmases for most people.

Yes, because the adverts are too similar each year. Ideas are just recycled!

I don't look forward to watching the new Christmas adverts anymore.

I love them! Festive adverts are so comforting. They make me feel warm and fuzzy inside.

Not at all. They're full of new and original ideas that bring extra magic to December.

I look forward to watching the new Christmas adverts every year.

No

Join the national conversation by logging into your VotesforSchools account or sharing your thoughts with your teacher!